



**BURGESS**

**Hardscape Designs**

---

**Landscaping Plants, Shrubs and Trees**

All plants are subject to availability.

Designs for hardscape and gardens are available upon request.

# Table of Contents

	Page	
Natural Stone, Retaining Walls	3	
Walkways, Patios	4	
Stairs, Pool Decks	5	
Privacy Screens, Lawns	6	
Driveways, Misc. Projects	7	
Annual Flowers	8	
Perennial Flowers	8-12	Vines
12		
Shade Trees	13-14	
Ornamental Trees	14	
Deciduous Shrubs	14-15	
Ground Covers	15	
Evergreen Shrubs	15-16	
Evergreen Trees	16-17	
Bulbs	17	
Grasses	18	
Fruit Trees/Shrubs	18	
Key Words	18	
Customer Resources	19	

# Natural Stone



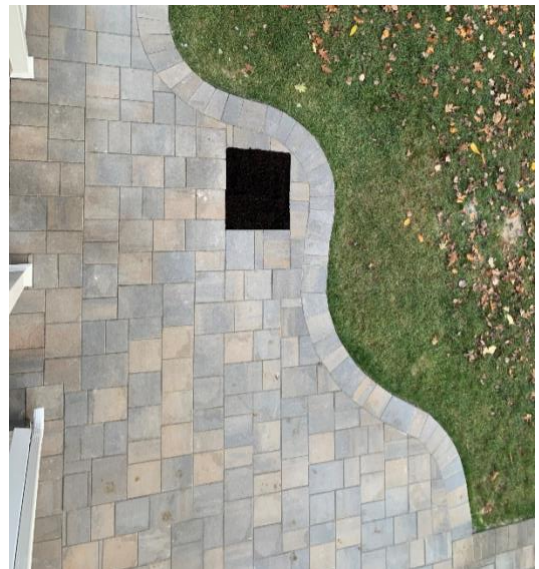
# Retaining Walls



# Walkways



# Patios



# Stairs



# Pools Decks



# Privacy Screens

# Lawns



# Driveways



# Misc. Projects



# Landscaping Plants

## Annual Flowers

### Ageratum

*6-8" height, partial shade-full sun, mounding form, long blooming period*

### Wax Begonia

*8-12" height, full shade to part sun, rounded form, easy to care for*

### Ornamental Cabbage and Kale

*8-12" height, partial shade to full sun, upright head form, hardy fall plant*

### Vinca, Madagascar Periwinkle

*12-24" height, partial shade to full sun, rounded form*

### Garden Impatiens

*6-24" height, full shade to part sun, rounded form, self-deadheading*

### Petunia

*6-15" height, partial shade to full sun, horizontal spreading form, deadheading for good reblooming*

### Salvia

*8-20" height, full sun, upright form, attracts birds and butterflies*

### Dusty Miller

*12-24" height, full sun, rounded form*

### Marigold

*12-36" height, full sun, upright form, may discourage some pests*

### Pansy

*6-12" height, full sun, sprawling form, good for spring plantings*

### Geranium

*12-36" height, full sun, upright form, deadheading needed for reblooming*

### New Wonder Scaevola

*6-12" height, full sun, horizontal spreading form, great for rock walls/overhangs*

### Hybrid Verbena

*6-10" height, full sun, sprawling form, attracts butterflies*



Wax Begonia



Dusty Miller

## Perennial Flowers

### Yarrow

*18-36" height, partial shade to full sun, mounded form, can be floppy if overwatered/naturalizing*

### Columbine

*24-36" height, partial shade to full sun, rounded form, can spread throughout garden/naturalizing*

### Astilbe

*18-24" height, full shade to partial sun, mounded form, good for naturalizing*



Astilbe



**Aster**

*24"-4' height, full sun, upright form, long bloom time*

**Threadleaf Coreopsis**

*18-24" height, partial shade to full sun, mounded form, attracts birds and butterflies*

**Purple Cone Flower**

*24"-4' height, full sun, upright form, attracts birds and butterflies/naturalizing*

**Daylily**

*36" to 4' height, partial shade to full sun, upright form, many colors/naturalizing*

**Coral Bells**

*10-12" height, partial shade to full sun, mounded form*

**Hostas**

*Varying heights from dwarf to large, rounded form, full shade to partial sun, many colors and flowers*

**Iris**

*12"-4' height, partial shade to full sun, upright form, good for wet areas*

**Peony**

*18" to 4' height, partial shade to full sun, upright/almost shrub like appearance, naturalizing*

**Bugleweed**

*6"-9" height, full shade to full sun, spiked flower form, many colors, aggressive ground cover*

**Hollyhock**

*2'-9" height, full sun, upright form, many colors, nice as a background or boarder plant*

**Lady's Mantle**

*6"-9" height, full sun to partial shade, mounded form, deer resistant*

**Circle Chives**

*Up to 12" height, full sun to partial shade, upright form, can easily overtake a garden if not controlled*

**Hybrid Anemone**

*2'-4' height, partial shade to full sun, mounded forms, many colors, needs moist soil*

**Rockcress**

*12" height, full sun, dense and spreading form, good for draping over stone walls*

**Sea Pinks**

*3"-12" height with flowers, full sun, dense mat form, salt tolerant plant*

**Silver Mound Artemesia**

*12"-18" height, full sun, mounded form, generally flowers are sheared before blooming*

**Basket of Gold**

*9"-12" height, full sun, sprawling form, normally removed after blooms die off*

**False Indigo**

*3'-4' height, partial shade to full sun, vase form, low maintenance plant*

**Heartleaf Bergenia**

*12"-18" height, partial shade to full sun, rounded form, many colors, best used as a foliage plant*

**Carpathian Harebell**

*6"-12" height, partial shade to full sun, rounded form, works well as boarders*



*Purple Cone Flower*



*Coral Bells*



*Basket of Gold*

**Peach-leaved Bellflower**

*2'-3' height, partial shade to full sun, upright forms, good for naturalizing, nice as a back boarder*

**Mountain Bluet**

*12"-24" height, partial shade to full sun, mounded to upright form, nice as a boarder*

**Snow-in-Summer**

*3"-6" height, full sun, upright and creeping form, should be trimmed after initial blooms*

**Bugbane**

*4'-6' height, partial shade to full sun, upright form, needs adequate moisture for growth*

**Tickseed**

*2'-3' height, full sun, clump form, good for naturalizing, should be deadheaded*

**Larkspur**

*4'-6' height, full sun, upright form, many colors, should be staked early*

**Cottage Pinks/Dianthus**

*many heights, full sun, mat forming, many foliage and flower colors, good as boarders*

**Fringed Bleeding Heart**

*12"-18" height, partial shade, mound form, bloom longer in moist shady areas*

**Foxglove**

*2'-5' height, partial shade, mounded form with stalk flowers, spreads within gardens*

**Leopards-bane**

*18"-24" height, partial shade to full sun, mounded form, good as cut flowers*

**Barrenwort**

*8"-12" height, full to partial shade, mounded form, nice as a shaded ground cover*

**Cushion Spurge**

*12"-18" height, full sun, mounded form, flowers are not wholly attractive, plant is nice for its greenery*

**Siberian Meadowsweet**

*2'-3' height, full to partial shade, mounded form with large stalk flowers, good as a rear boarder*

**Sweet Woodruff**

*6"-8" height, full to partial shade, low spreading form, easy to rake over in the fall*

**Baby's Breath**

*12"-36" height, full sun, rounded form, nice filler plant in gardens*

**Sneezeweed**

*2½'-6' height, full sun, upright form, many colors, good cutting flower*

**Sunflower Heliopsis**

*3'-4' height, partial shade to full sun, upright form, good cutting flower*

**Lenten Rose**

*15"-18" height, full to partial shade, mounded form, will spread throughout a garden*

**Heuchera**

*18" height, partial shade to full sun, mounded form, good naturalizing plant*

**Candytuft**

*6"-12" height, full sun, woody short shrub, nice for edging*



Bugbane



Sweet Woodruff



Lenten Rose

**Japanese Iris**

*18"-24" height, full sun to partial shade, upright form, good in wet areas*

**Siberian Iris**

*2'-4' height, partial shade to full sun, upright form, nice as borders*

**Spotted Deadnettle**

*8"-12" height, full to partial shade, spreading form, sometimes used as groundcover/can be invasive*

**Shasta Daisy**

*1'-3' height, partial shade to full sun, rounded to upright form, good for naturalizing/cutting gardens*

**Spike Gayfeather**

*1½'-3' height, partial shade to full sun, upright form, good as borders*

**The Rocket Ligularia**

*5'-6' height, partial shade to full sun, mounded form, good in moist areas*

**Money Plant**

*2'-3' height, partial shade to full sun, upright form, can look like a weed, good in cutting gardens*

**Lupine**

*3'-4' height, partial shade to full sun, upright form, short blooming time, self-seeds*

**Rose Campion**

*2'-3' height, full sun, upright form, good for borders, self-seed*

**Beebalm**

*2'-3' height, partial shade to full sun, upright form, spreads profusely*

**Forget-me-not**

*6"-8" height, light shade, tufted mound, good for naturalizing, spreads easily*

**Catmint**

*18"-36" height, full sun, upright/spreading form, good as borders*

**Evening Primrose**

*6"-24" height, full sun, upright/spreading form, best planted in masses*

**Russian Sage**

*3'-4' height, full sun, vase shape form, should trim back foliage in spring*

**Garden Phlox**

*15"-36" height, partial shade to full sun, clumping/upright form, good as borders*

**Chinese Lantern**

*18"-24" height, full sun, upright form, can be invasive*

**Balloon Flower**

*2'-3' height, partial shade to full sun, upright/mounded form, good in borders*

**Jacobs Ladder**

*18"-24" height, partial shade to full sun, upright form, good as borders*

**Soloman's Seal**

*2'-3' height, shade plant, upright/arching form, good for naturalizing*

**Primrose**

*6"-12" height, partial shade, upright form, good for naturalizing*

**Black Eyed Susan**



Siberian Iris



Russian Sage



Solomons Seal

*2'-3' height, light shade to full sun, upright to rounded form, good for borders and cutting gardens*

**Autumn Joy Sedum**

*18"-24" height, light shade to full sun, rounded to upright form, very good use anywhere other than full shade*

**Hens and Chicks**

*3"-4" height, light shade to full sun, flat rounded form, good in rock gardens*

**Lamb's Ear**

*12"-15" height, full sun, low spreading form, good as borders*

**Globeflower**

*18"-24" height, light shade to full sun, upright form, good as borders*

**Spike Speedwell**

*10"-3' height, light shade to full sun, upright form, good in cutting gardens*

**Sweet Viola**

*6"-8" height, partial shade, low form, good for naturalizing/can spread aggressively*



Hens and Chicks

## Vines

**Gold Flame Honeysuckle**

*10'-13' height, partial shade to full sun, pinkish red blooms, great for covering arbors/walls*

**Wisteria**

*30' height and width, partial to full sun, purple blooms, great for covering structures/must be sturdy*

**Climbing Rose**

*10' +/- height, full sun, multiple colors, climbs well in lattice, nice for covering sides of buildings*

**Clematis**

*10'-30' height, partial shade to full sun, multiple colors, climbs well on lattice/mailboxes*

## Shade Trees

**Boxelder**

*25'-50' height, partial shade to full sun, rounded form, yellow blooms/orange-yellow fall color*

**Norway Maple**

*25'-50' height, full sun, ovate to round form, yellow blooms/orange-yellow fall color*

**Red Maple**

*50'-75' height, full shade to full sun, many forms, red blooms/red-yellow fall color*

**Silver Maple**

*60'-70' height, partial shade to full sun, obovate form, red blooms/yellow fall color*

**Sugar Maple**

*50'-65' height, partial shade to full sun, ovate form, green blooms/red-orange fall color*

**River Birch**

*25'-40' height, partial shade to full sun, ovate form, brown blooms/yellow fall color*

**Paper/White Birch**



Boxelder

*50'-75' height, partial shade to full sun, pyramidal to ovate form, brown-green blooms/yellow fall color*

**Shagbark Hickory**

*25'-40' height, partial shade to full sun, ovate to oblong form, brown blooms/yellow fall color*

**White Ash**

*50'-75' height, partial shade to full sun, rounded form at maturity, green blooms/purple-yellow fall color*

**Thornless Honeylocust**

*25'-50' height, partial shade to full sun, rounded form, yellow blooms/orange-yellow fall color*

**Black Walnut**

*50'-75' height, full sun, ovate form, green blooms*

**Black Locust**

*50'-75' height, full sun, ovate form, white blooms/yellow fall color*

**Pin Oak**

*50'-75' height, full sun, pyramidal form, brown blooms/copper-red fall color*

**Red Oak**

*50'-75' height, full sun, rounded form, brown blooms/red fall color*

**Black Birch**

*45'-55' height, partial shade to full sun, oval-upright form, brown blooms/yellow fall color*

**American Beech**

*50'-75' height, full shade to full sun, pyramidal-ovate form, green blooms/copper-yellow fall color*

**Ginkgo/Maidenhair Tree**

*50'-75' height, partial shade to full sun, ovate-pyramidal form, green blooms/yellow fall color*

**Kentucky Coffeetree**

*50'-75' height, full sun, ovate-pyramidal form, white blooms/yellow fall color*

**Tulip Tree/Yellow Poplar**

*65'-90' height, full sun, ovate-globose form, green-yellow blooms/yellow fall color*

**Sycamore Tree**

*70'-90' height, full sun, pyramidal form, red blooms/yellow fall color*

**Trembling Aspen**

*50'-60' height, full sun, ovate form, yellow blooms/yellow fall color*

**Black Cherry**

*50'-75' height, partial shade to full sun, ovate form, white blooms/orange-yellow fall color*

**White Oak**

*50'-75' height, partial shade to full sun, pyramidal to rounded form, brown blooms/red fall color*

**Basswood**

*75'-80' height, partial shade to full sun, ovate to pyramidal form, green-yellow blooms/yellow fall color*

**American Elm**

*75'-90' height, partial shade to full sun, vase formed*

**Flowering Dogwood**

*20'-25' height, full shade to full sun, rounded form, white blooms/red fall color*

**Hawthorn**



Thornless Honeylocust (Fall)



Tulip Tree

*15'-25' height, full sun, rounded to pyramidal form, white blooms/red fall color*

## Ornamental Trees

### Serviceberry

*10'-25' height, partial shade to full sun, upright form, white blooms/red-yellow fall color*

### American Hornbeam

*25'-50' height, full shade to full sun, ovate form, orange-yellow blooms/red-yellow fall color*

### Pagoda Dogwood

*15'-25' height, full shade to full sun, oval to rounded form, white blooms/red fall color*

### Flowering Crabapple

*6'-25' height, varied form, full sun, white-red blooms/yellow fall color*

### Magnolia

*10'-12' height, partial shade to full sun, pyramidal form, white-red-yellow forms/yellow fall color*

### European Mountain Ash

*25'-40' height, full sun, oval to upright form, white blooms/yellow-red fall color*



Serviceberry

## Deciduous Shrubs

### Sweetfern

*36"-6' height, full shade to full sun, upright form, white-yellow blooms/yellow-red fall color*

### Forsythia

*8'-10' height, partial shade to full sun, fountain form, yellow blooms/yellow fall leaf*

### Winged Euonymus

*12'-20' height, partial shade to full sun, rounded to upright form, yellow-green blooms/red fall color*

### Common Witch-hazel

*15'-20' height, partial shade to full sun, rounded to fountain form, yellow blooms/yellow fall color*

### Winterberry

*6'-10' height, partial shade to full sun, rounded to vase form, white blooms/no change in fall*

### Honeysuckle

*6'-10' height, partial shade to full sun, rounded to vase form, white blooms/no change in fall*

### Common Ninebark

*5'-7' height, full sun, upright form, white blooms/brown fall leaf*

### Northern Bayberry

*10'-15' height, full sun to full shade, rounded to vase form, green blooms/no change in fall*

### Shrubby Cinquefoil

*12"-4' height, partial shade to full sun, rounded form, white to red and yellow blooms*

### Staghorn Sumac

*15'-25' height, partial shade to full sun, upright form, yellow blooms/yellow-red fall color*

### Elderberry

*10'-15' height, full sun, rounded form, white blooms/yellow fall color*



Common Ninebark



Shrubby Cinquefoil

**Lilac**

*8'-12' height, partial shade to full sun, rounded to upright form, purple-white blooms/no change in fall*

**Snowberry**

*5'-6' height, partial shade to full sun, rounded to spreading form, pink to white blooms/no change in fall*

**American Cranberry Bush**

*8'-12' height, partial shade to full sun, rounded to upright form, white blooms/purple to red fall color*

**Arrowwood**

*5'-15' height, partial shade to full sun, upright to rounded form, white blooms/orange-red fall color*

**Ground Covers****English Ivy**

*6"-12" height, full shade to full sun, vine/ground cover, white blooms/no change in fall*

**Japanese Spurge**

*6"-10" height, full shade to partial shade, upright ground cover, white blooms/no change in fall*

**Periwinkle/Vinca**

*6"-12" height, full shade to partial sun, vine/ground cover form, blue/lavender/purple blooms/no change in fall*

**European Ginger**

*6"-10" height, partial to full shade, spreading ground cover, slow growing but maintenance free*

**Bigroot Geranium**

*12"-18" height, full to partial shade, spreading mound form, many colors*

**Bloody Cranesbill**

*6"-12" height, partial shade to full sun, mounding form, many colors*

**Creeping Phlox**

*6"-12" height, partial shade, creeping mat form, great as a flowered ground cover*

**Moss Phlox**

*3"-6" height, full sun, mounding form/spreading, good for over walls/groundcover*

**Dragons Blood Sedum**

*2"-6" height, full sun, ground cover form, good for stone walls and rock gardens*



European Ginger

**Evergreen Shrubs****Boxwood**

*Varying heights, partial shade to full sun, many forms, green blooms/green fall color*

**Japanese Holly**

*6'-10' height, partial shade to full sun, rounded form, white-green blooms/green fall color*

**Inkberry** *6'-10' height, partial shade to full sun, oval to vase form, white blooms/no change in fall*

**Mountain Laurel**

*6'-10' height, full shade to full sun, oval form, white-red blooms/no change in fall*



Inkberry

**Sheep Laurel**

*12"-36" height, full shade to full sun, rounded to horizontal spreading form, pink-purple blooms/no change in fall*

**Mountain Andromeda**

*36"-6' height, partial shade to full sun, rounded form, white blooms/no change in fall*

**Catawba Rhododendron**

*6'-10' height, partial shade to partial sun, rounded to sprawling form, lavender to purple form/no change in fall*

**Rosebay Rhododendron**

*15'-20' height, partial shade to partial sun, rounded to sprawling form, pink to purple to white blooms/no change in fall*

**PJM Rhododendron**

*50'-75' height, full sun, pyramidal shape, yellow to red blooms/yellow fall leaf*

**Candytuft**

*6"-12" height, full sun, short shrub, should be sheered after blooming for regrowth*

**Canadian Yew**

*3'-5' height, full shade to partial shade, groundcover to sprawling form, green blooms/no change in fall*

**Common Juniper**

*6"-12" height, partial shade to full sun, upright to spreading, yellow to brown blooms/no change in fall*

**Yew**

*15"-25" height, partial shade to full sun, rounded form, yellow to green blooms/no change in fall*

**Evergreen Trees****Balsam Fir**

*30'-50' height, partial shade to full sun, pyramidal form, red blooms/no change in fall*

**Eastern Redcedar**

*25'-50' height, partial shade to full sun, columnar to pyramidal form, yellow to green blooms/no change in fall*

**Norway Spruce**

*60'-80' height, full sun, pyramidal form, pink blooms/no change in fall*

**White Spruce**

*35'-50' height, partial shade to full sun, columnar to pyramidal form, yellow to red blooms/no change in fall*

**Colorado Blue Spruce**

*35'-60' height, partial shade to full sun, columnar to pyramidal form, green-orange blooms/no change in fall*

**Red Pine**

*40'-60' height, full sun, pyramidal to oval form, purple to red blooms/no change in fall*

**Pitch Pine**

*40'-60' height, full sun, pyramidal form, yellow to green blooms/no change in fall*

**Eastern White Pine**

*50'-75' height, partial shade to full sun, oval to pyramidal form, pink to yellow blooms/no change in fall*

**Scot's Pine**

*45'-60' height, full sun, pyramidal form, yellow blooms/no change in fall*



Eastern Red Cedar



**Eastern Arborvitae**

*25'-40' height, partial shade to full sun, pyramidal form, yellow blooms/no change in fall*

**Dark American Arborvitae**

*20'-30' height, partial shade to full sun, pyramidal form, no change in fall*

**Green Giant Arborvitae**

*40'-60' height, partial shade to full sun, pyramidal form, no change in fall*

**Emeral Green Arborvitae**

*15' height, partial shade to full sun, Pyramidal form, no change in fall*

**Canadian Hemlock**

*50'-75' height, full shade to full sun, pyramidal form, green to yellow blooms/no change in fall*



Canadian Hemlock

**Bulbs**

**Tuberous Begonia**

*6"-12" height, full shade to partial sun, upright form, many colors*

**Canna**

*24"-4' height, full sun, upright form, many colors*

**Garden Dahlia**

*12"-6' height, partial shade to full sun, upright form, many colors*

**Gladious**

*24"-4' height, full sun, upright form, many colors*

**Glory of the Snow**

*3"-6" height, partial shade to full sun, upright form, white color*



Glory of the Snow

**Lily of the Valley**

*6"-12" height, full shade to partial sun, upright form, pink/white color*

**Dutch Crocus**

*3"-6" height, partial shade to full sun, upright form, many colors*

**Garden Hyacinth**

*6"-12" height, full sun, upright form, many colors*

**Iris**

*12"-4' height, partial shade to full sun, upright form, purple color*

**Garden Lily**

*12"-4' height, partial shade to full sun, upright form, many colors*

**Grape Hyacinth**

*6"-12" height, full sun, irregular form, blue color*



Grape Hyacinth

**Daffodil**

*12"-18" height, partial shade to full sun, upright form, many colors*

**Tulip**

*12"-18" height, partial shade to full sun, upright form, many colors*

## Grasses

### Blue Beach Grass

*2'-3' height, full sun, arching clump form, good for bank stabilization/naturalized areas*

### Blue Fescue

*6"-10" height, light shade to full sun, tufted clump form, nice for borders/can spread vigorously*

### Maiden Grass

*Up to 7' height, full sun, upright clumps, nice as screens/boarders*

### Porcupine Grass

*2'-3' height, light shade to full sun, upright form, good for massing/specimens*

### Dwarf Fountain grass

*2' height, light shade to full sun, arching mounded shape, nice in mass plantings*



Maiden Grass

## Fruit Trees/Shrubs

### Cherry

*10'-20' height, full sun, many varieties*

### Peach

*10'-15' height, full sun, many varieties*

### Pear

*15'-20' height, full sun, many varieties*

### Blueberry

*12"-6' height, partial shade to full sun, many varieties and heights*

### Apple

*10'-20' height depending on variety, full sun, many varieties*



Pear Tree (Spring)

## Key Words

**Naturalizing-** To naturalize plants is the process of growing them as if they were in the wild, establishing them as if they were native to the area. This is usually done along a wood line or in a shaded area.

**Deadheading-** remove dead flower heads from a plant to encourage further blooming.

**Annual-** plants that are planted yearly, normally flowering plants that die at the end of the season

**Perennial-** plants that return every year in the same spot

**Shade Tree-** trees that grow to larger heights, upwards of 100' that create a large, shaded area

**Ornamental Tree-** trees of a smaller height that are used as standalone to create a centerpiece, normally have a pleasing form or flowering pattern

**Self-seeding-** spreads by dropping seeds that take root in the surrounding area

**Ovate-** oval form

**Globose-** round form

**Pyramidal-** pyramid/triangular shaped

**Upright-** stands upright/columnar

**Horizontal Spreading-** spreading out in all directions above the ground

**Vase-** V-shaped

**Fountain-** growing out and down/umbrella shaped

**Spreading-** growing out and spreading over the area it grows in, can be done with self-reseeding

**Mat-** growing thickly and flat to the ground

# Customer Resources

*For ideas and inspiration past what is provided above, please visit these sites. Landcare is open to the public.*

**Techo-Bloc – [www.techo-bloc.com](http://www.techo-bloc.com)**

**Cambridge Pavingstones – [www.cambridgepavers.com](http://www.cambridgepavers.com)**

**Ideal Stone – [www.idealconcreteblock.com](http://www.idealconcreteblock.com)**

**LandCare Associartes Inc. – [www.landcaresstone.com](http://www.landcaresstone.com)**

**Millicans Nursery (closed to public) – [www.mniplants.com](http://www.mniplants.com)**

**Van Berkum Nursery (closed to public) – [www.vanberkumnursery.com](http://www.vanberkumnursery.com)**



**BURGESS**